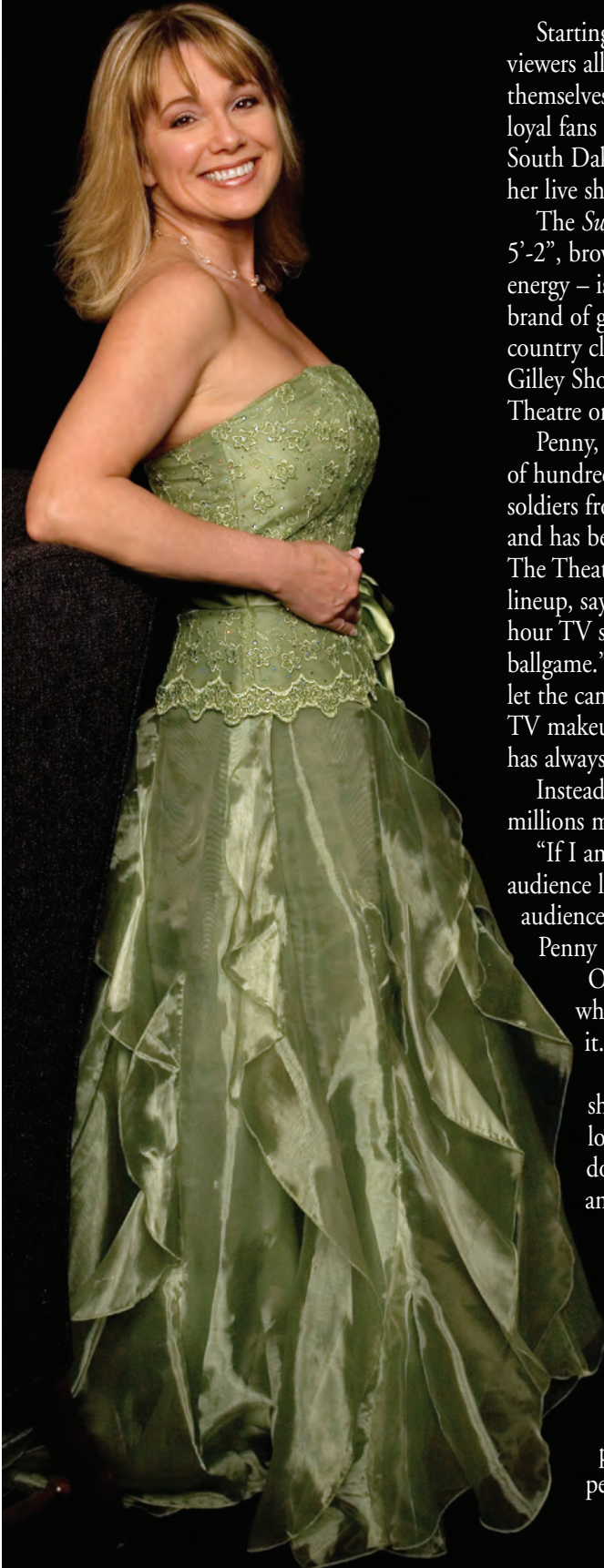


MUSIC & ENTERTAINMENT:
PENNY GILLEY, RFD-TV THE THEATRE + TV

The 'Sweetheart of Country Music' Gets Her Own TV Show



Starting in September, RFD-TV viewers all over America can see for themselves why Penny Gilley's famously loyal fans drove from as far away as South Dakota and East Texas to catch her live show in Branson.

The *Sweetheart of Country Music* – a 5'-2", brown-eyed, blonde ball of energy – is now bringing her special brand of glitz, glamour and down-home country classics to the new "Penny Gilley Show" direct from RFD-TV The Theatre on the Branson strip.

Penny, who has performed in front of hundreds of thousands of U.S. soldiers from Bosnia to Korea to Iraq, and has been a mainstay of RFD-TV The Theater's spring and summer lineup, says putting on a weekly half-hour TV show is "a whole new ballgame." But she is determined not to let the cameras, lights and fussing over TV makeup break that special bond she has always had with her fans.

Instead, she wants to share it with millions more.

"If I am able to connect with my TV audience like I do with my live audience, it will be a huge success,"

Penny says.

One of the secrets is knowing what people like – and delivering it.

"I'll get the opportunity to share the kind of music that I love – and that people love and don't get a chance to hear much any more: classic country."

So get ready for a lot of Patsy Cline, Tammy Wynette and Barbara Mandrell.

("My lifetime favorites," says Penny.)

Penny loves chatting with her live audiences and plans to bring some of that personal intimacy to her TV

show. One way is to avoid a script and just keep it spontaneous. "I really want it to be laid back," she says.

So look for a lot of anything-goes banter with surprise performers dropping in from their shows around Branson. And more than a few giggles with veteran impersonator Jeff Brandt, who will be a regular on the show. Brandt, who was the opening act for Wayne Newton for 13 years, has a deep bag of tricks to bring to the party with his dead-on impersonations of hundreds of favorite singers like Elvis, Conway Twitty, Tom Jones and Willie Nelson.

And get ready for Penny's 7-piece band that features a female fiddler who loves to clog dance while playing *Orange Blossom Special*.

Penny might even answer email questions from the TV audience on the air just to keep things lively and unexpected.

How does Penny know her style of entertaining works?

By looking out at her audience and seeing familiar fans from all over the country who came to catch her show in Branson.

It's not surprising Penny fits right into this entertainment hotspot in America's heartland.

"I love performing, and for me to be able to share that has always been special. Now I have a chance to connect with millions of TV viewers. That's exciting."

So how does Penny Gilley plan to kick off this new adventure?

"Just get in front of the camera and make it happen," she says.

RFD-TV
The Penny Gilley Show will premiere on Mondays at 9 p.m. EST

The Penny Gilley Show featuring Jeff Brandt Performs Thursday, Friday, Saturday and Sunday at RFD-TV The Theatre, beginning in October.